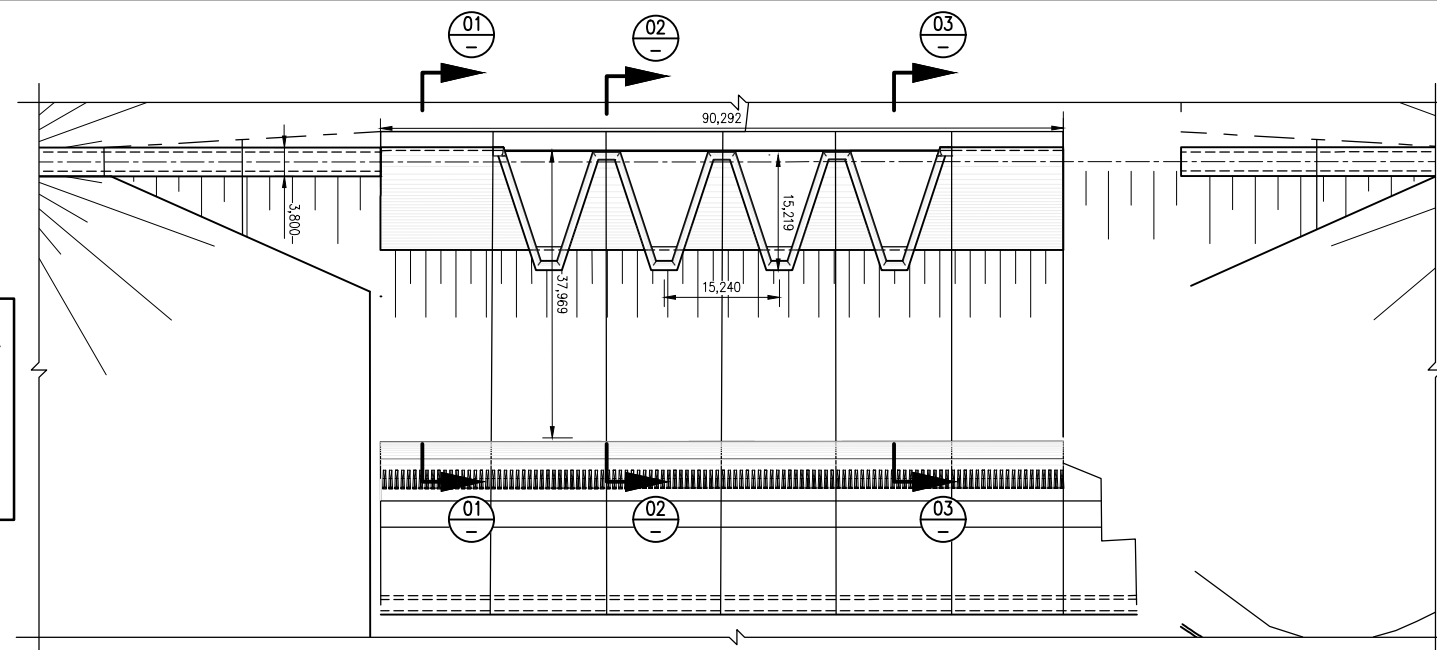
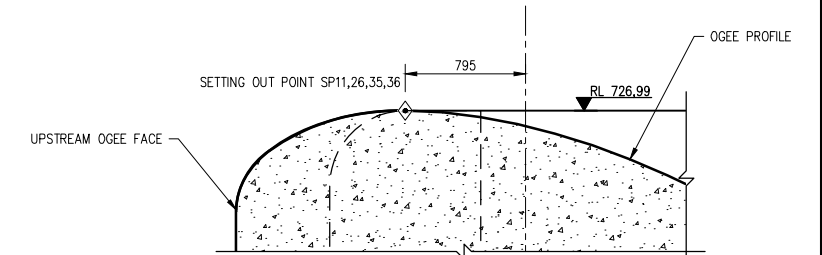


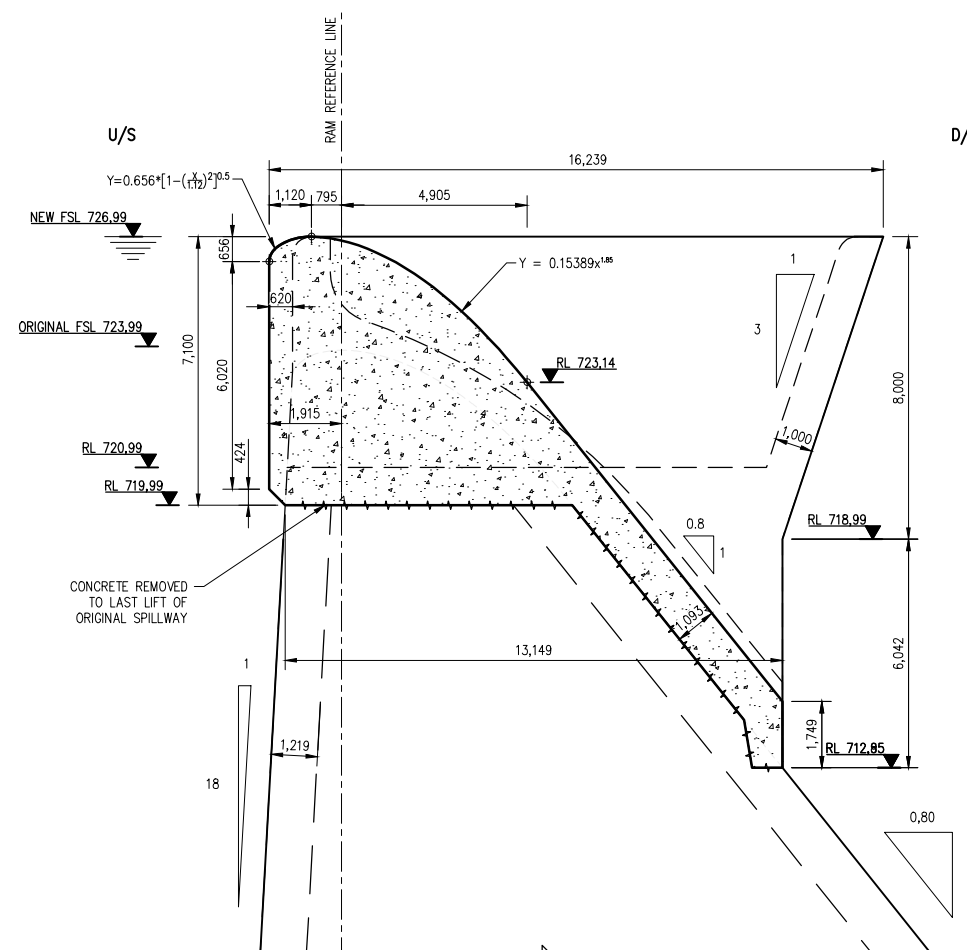
1. ABRUPT IRREGULARITIES ARE NOT PERMITTED. ANY RESIDUAL IRREGULARITIES REMAINING AFTER REMOVAL OF FORMWORK OR SURFACE FORMING SHALL BE REMOVED BY GRINDING TO ACHIEVE A TRANSITION OF 1 IN 25 BETWEEN THE SURFACES ADJACENT TO THE IRREGULARITY. SUCH GROUND SURFACES MAY REQUIRE SEALING OF THE SURFACE BY AN EPOXY OR OTHER MATERIAL ACCEPTABLE TO THE ENGINEER.
2. THE MAXIMUM ALLOWABLE GRADUAL IRREGULARITY IS 5 mm. THIS IS THE VALUE BY WHICH THE SURFACE TESTED MAY DEVIATE FROM A 3 m LONG STRAIGHT EDGE PLACED AT ANY POSITION ON THE SURFACE OR CORRECTLY SHAPED TEMPLATE OVER THE FULL CURVED SURFACE.



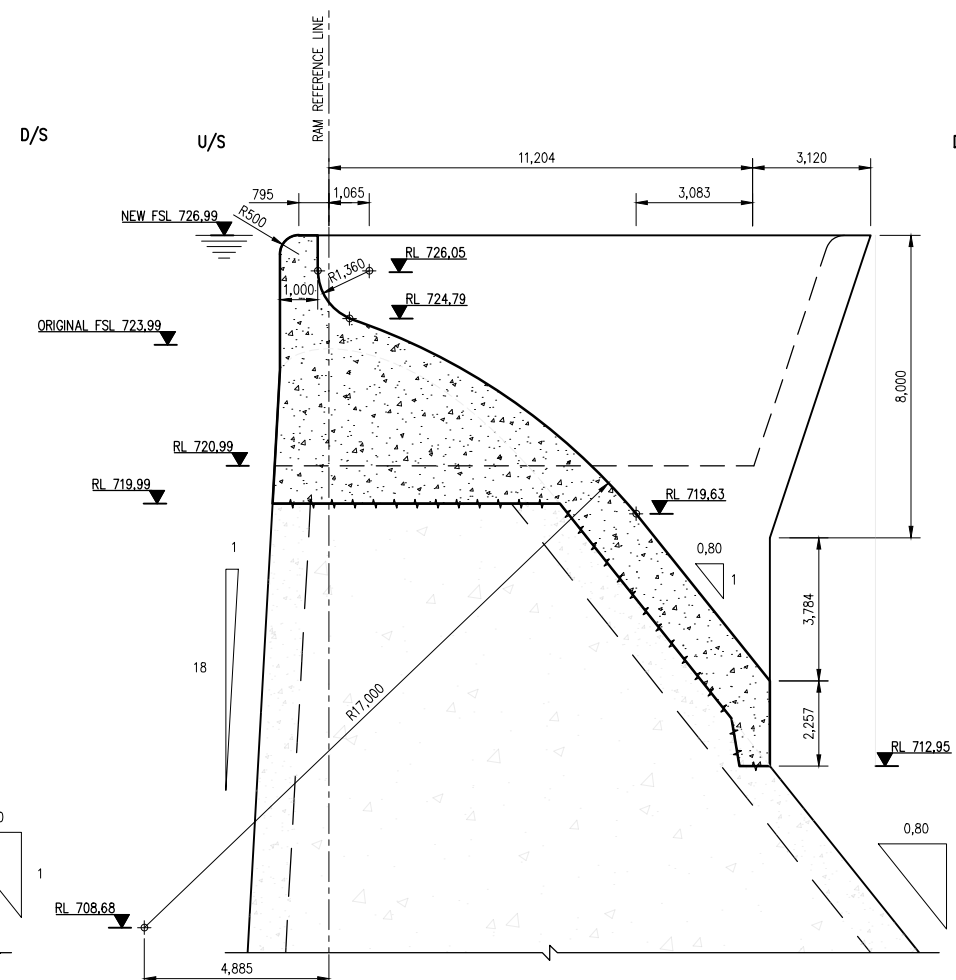
SPILLWAY PLAN VIEW
SCALE 1:250



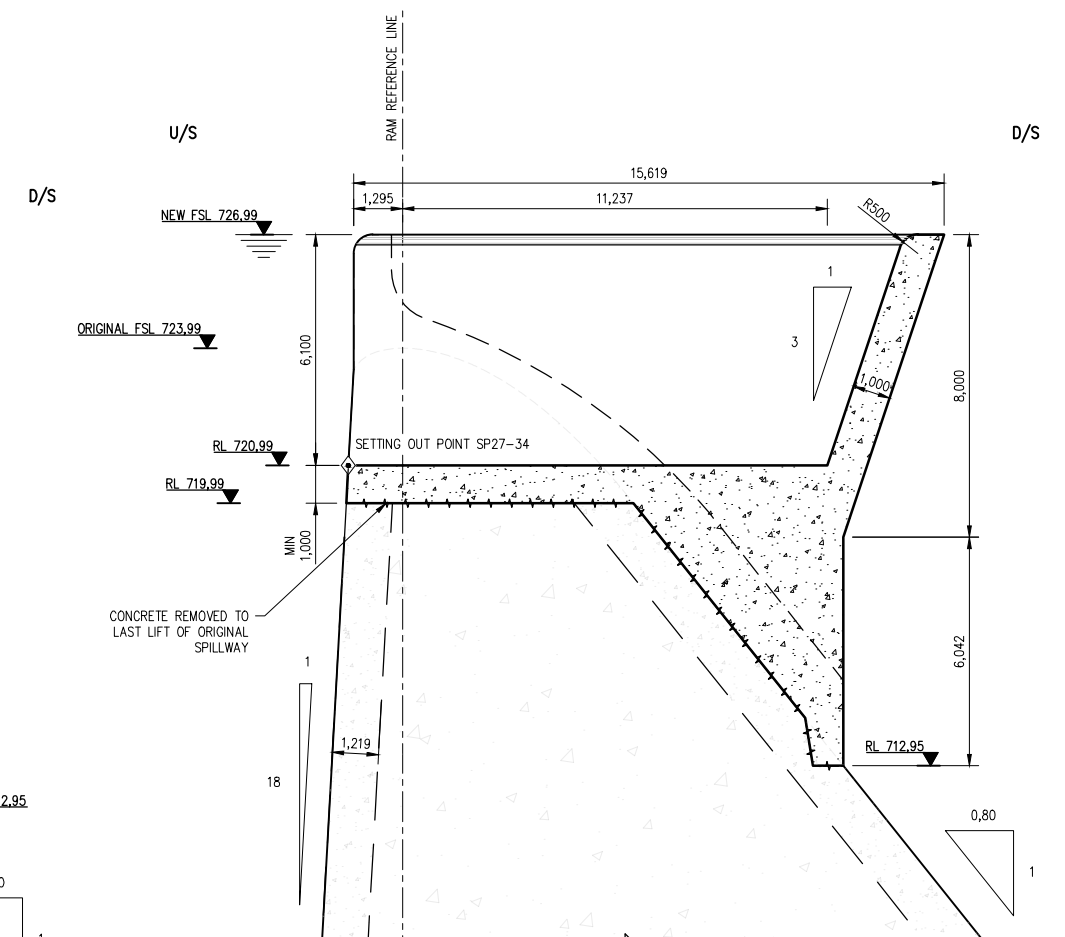
SETTING OUT POINT ON OGEE



SECTION 01-01 – OGEE OUTGOING CHANNEL
SCALE 1:100



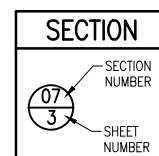
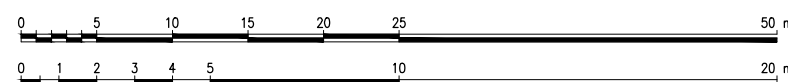
SECTION 02-02 – INNER OUTGOING CHANNEL
SCALE 1:100




SECTION 03-03 - INCOMING CHANNEL

3/3	SETTING OUT	9368-310	X
2/3	SECTIONS AND DETAILS 2	9368-309	X
1/1	LIST OF DRAWINGS	9368-015	X
SHEET	DESCRIPTION	OTHER No.	REG. No.
LIST OF DRAWINGS			

SCALE 1:100

[illegible]

<p align="center">DEPARTMENT OF WATER AND SANITATION REPUBLIC OF SOUTH AFRICA</p>	
<p>HEAD OFFICE ENGINEERING SERVICES PRIVATE BAG X313 PRETORIA 0001</p>	<p align="center"></p> <p align="center">D.M. MASHTISHO DIRECTOR GENERAL</p>
<p align="right">SEDIENG BUILDING 185 FRANCIS BAARD STREET PRETORIA (012) 336-7500</p>	
M BLAESER	DESIGN: HJ WRIGHT
CHECKED:	DATE: DRAWN: NM
HJ WRIGHT	
ENGINEER:	DATE: EXT. APPROVAL / DESIGN CHECKED: D
Q SHAW	
CHIEF ENGINEER / APP. (Dr. Enq):	DATE: DIRECTOR (Dr. Enq):

GROOT LETABA RIVER WATER DEVELOPMENT PROJECT (GLWaP)

SPILLWAY RAISING

SECTIONS AND DETAILS 1

PROVINCE:	LIMPOPO	DISTRICT:	TZANEEN	KEYCODES:	-	-	-	-	-	OTHER NUMBER	9368-308
LOCALITY No.:	-	TENDER/ CONTRACT No.	-	SHEET	REG. No.					REV.	
CALCULATION FILE:	-			1 of 3	X					01	